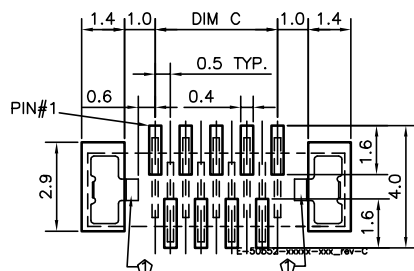
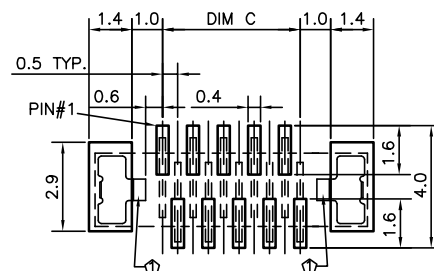


APPLICABLE FPC/FFC LAYOUT
GENERAL TOLERANCE ±0.05

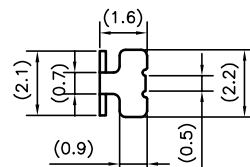
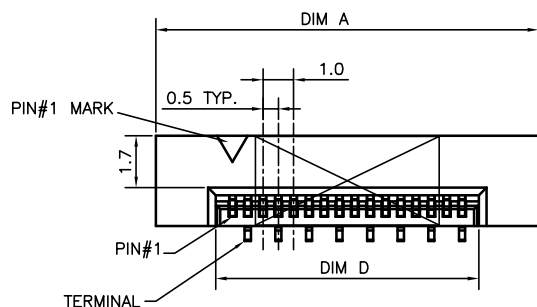


RECOMMENDED PCB LAYOUT(ODD PIN)
GENERAL TOLERANCE ±0.05

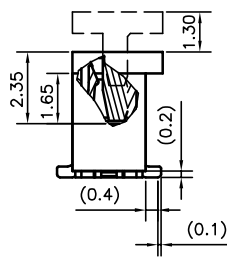
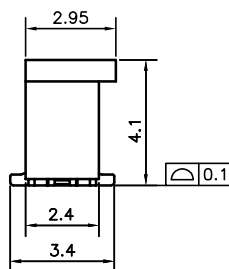
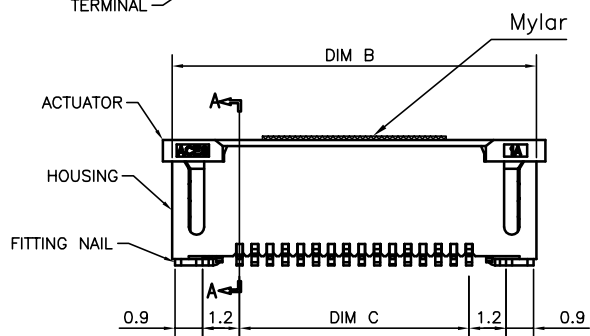


RECOMMENDED PCB LAYOUT(EVEN PIN)
GENERAL TOLERANCE ±0.05

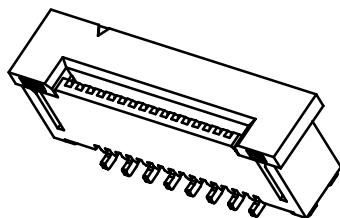
⇨ OPEN THIS SPACE FOR FITTING NAIL PLATE AREA



FITTING NAIL PLATE DIM.



SECTION A-A



NOTES:

- MATERIAL:
 - HOUSING: THERMOPLASTIC, HIGH TEMP., UL94V-0;
 - ACTUATOR: THERMOPLASTIC, HIGH TEMP., UL94V-0;
 - CONTACT: COPPER ALLOY
 - FITTING NAIL: COPPER ALLOY
- FINISH:
 - CONTACT:
 - 50u" MIN. NICKEL UNDERPLATING OVERALL.
 - N:100u" MIN. MATTE TIN PLATING OVERALL,
 - 1:GOLD FLASH OVERALL.
 - C:GOLD FLASH(1u" MIN),15u" Au ON CONTACT
 - B:GOLD FLASH(1u" MIN),5u" Au ON CONTACT
 - 3:1u" Min. GOLD PLATING ON CONTACT AND SOLDER AREA
 - FITTING NAIL:
 - 50u" MIN. NICKEL UNDERPLATING OVERALL.
 - N:100u" MIN. MATTE TIN PLATING OVERALL,
 - 1:GOLD FLASH OVERALL.
- REFLOW SOLDER CAPABLE TO 260°C PER ACES SPEC.
- SPEC. PLS. REFER TO PS-50552-XXXX-XXX
- PACKAGE PLS. REFER TO 91501-XXXX-TRP
- PART NUMBER

50552-XXX X X-XXX	XXX	Housing Color.	Actuator Color.
NO OF CKT	001	BLACK	WHITE
	002	WHITE	BLACK

PACKING
0: TAPE & REEL
1: TUBE
4: TAPE & REEL WITH MYLAR
5: TUBE WITH MYLAR

PLATING
N: LEAD FREE(MATT TIN)
1: G/F OVERALL (LEAD FREE)
C:15u" GOLD ON CONTACT
B:5u" GOLD ON CONTACT
3:1u" GOLD PLATING ON CONTACT

CKTS	DIM A	DIM B	DIM C	DIM D	M/Size	CKTS	DIM A	DIM B	DIM C	DIM D	M/Size
006	7.5	6.9	2.5	3.6	W3T12	029	19	18.4	14	15.1	W6T12
007	8	7.4	3	4.1	W3T12	030	19.5	18.9	14.5	15.6	W6T12
008	8.5	7.9	3.5	4.6	W3T12	031	20	19.4	15	16.1	W8T12
009	9	8.4	4	5.1	W6T12	032	20.5	19.9	15.5	16.6	W8T12
010	9.5	8.9	4.5	5.6	W6T12	033	21	20.4	16	17.1	W8T12
011	10	9.4	5	6.1	W6T12	034	21.5	20.9	16.5	17.6	W8T12
012	10.5	9.9	5.5	6.6	W6T12	035	22	21.4	17	18.1	W8T12
013	11	10.4	6	7.1	W6T12	036	22.5	21.9	17.5	18.6	W8T12
014	11.5	10.9	6.5	7.6	W6T12	037	23	22.4	18	19.1	W8T12
015	12	11.4	7	8.1	W6T12	038	23.5	22.9	18.5	19.6	W8T12
016	12.5	11.9	7.5	8.6	W6T12	039	24	23.4	19	20.1	W8T12
017	13	12.4	8	9.1	W6T12	040	24.5	23.9	19.5	20.6	W8T12
018	13.5	12.9	8.5	9.6	W6T12	041	25	24.4	20	21.1	W8T12
019	14	13.4	9	10.1	W6T12	042	25.5	24.9	20.5	21.6	W8T12
020	14.5	13.9	9.5	10.6	W6T12	043	26	25.4	21	22.1	W8T12
021	15	14.4	10	11.1	W6T12	044	26.5	25.9	21.5	22.6	W8T12
022	15.5	14.9	10.5	11.6	W6T12	045	27	26.4	22	23.1	W8T12
023	16	15.4	11	12.1	W6T12	046	27.5	26.9	22.5	23.6	W8T12
024	16.5	15.9	11.5	12.6	W6T12	047	28	27.4	23	24.1	W8T12
025	17	16.4	12	13.1	W6T12	048	28.5	27.9	23.5	24.6	W8T12
026	17.5	16.9	12.5	13.6	W6T12	049	29	28.4	24	25.1	W8T12
027	18	17.4	13	14.1	W6T12	050	29.5	28.9	24.5	25.6	W8T12
028	18.5	17.9	13.5	14.6	W6T12						

一般公差 TOLERANCES X ±0.5 XX ±0.15 X ±0.25 XXX ±0.1 ANGLES ±2°		宏致電子股份有限公司 Aces Electronic Co.,Ltd.	
檢驗尺寸標示 SYMBOLS Ⓞ Ⓢ INDICATE CLASSIFICATION DIMENSION Ⓢ MARK IS CRITICAL DIM. Ⓞ MARK IS MAJOR DIM.	品名 (TITLE) 0.5mm PITCH ZIF CONN. SMT S/T TYPE 圖號 (DWG.NO) 50552-XXXX-XXX	製圖 (DR) 22/11/29 審核 (CHKD) BRAVE 核准 (APPD) BRAVE	張數 (SHEET) 1 OF 1 比例 (SCALE) 5:1 單位 (UNITS) mm
表面處理 (FINISH)	比例 (SCALE)	單位 (UNITS)	張數 (SHEET)
	5:1	mm	1 OF 1
			SIZE A4
			REV F